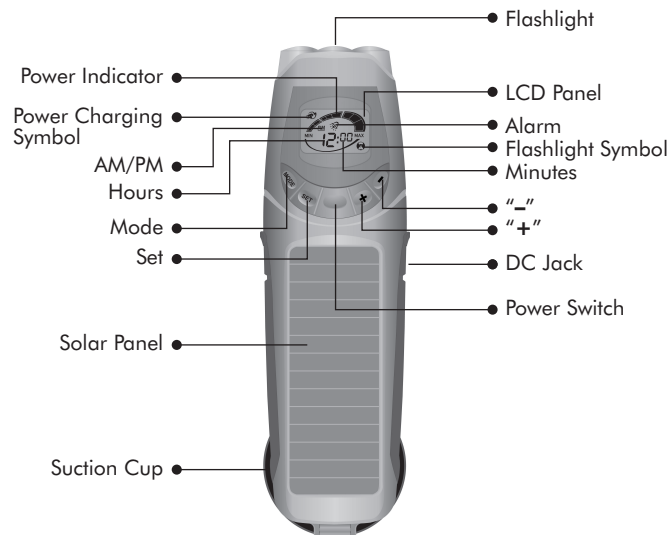


DORCY L.E.D.

SOLAR CLOCK AND FLASHLIGHT

Remove the insulator before use.

The light would flash once to indicate the power contact has been correctly connected while the insulator removed.



Flashlight Operation:

Press the Power Switch once to turn on full power.
Press the Power Switch twice to turn on in half power (power saving mode).
Press the Power Switch three times to turn on blinking mode.
Press again to switch off.

The allowance of power remaining is displayed on the LCD panel with the symbol of (see diagram), shown once power switch is activated.

The power switch stops functioning once the alarm is activated and sounded, press any of the (MODE), (SET), (+), (-), buttons to turn alarm off once activated.



Charging:

Solar Charging

Position product so solar panel is directed towards light source.
The battery symbol appears and product begins to charge.
Capability of power charging is divided into three:



Status 1: Lower portion of power indicator is filled when charging under fluorescent lights.



Status 2: Lower and middle portions of power indicator is filled when charging indirectly through natural light.



Status 3: All portions of power indicator are filled when charged directly through natural light.

USB Charging

Plug both ends of the USB connector to the product and computer. All portions of the power indicator would be filled up completely once power contact is connected. USB charging is recommended for 10 to 15 hours.



Attention: The intensity of the power indicator is a reference while power is charging. To find out exact power remaining turn flashlight on and refer to the LCD panel display.



Clock and Alarm Function:

Button Instructions

- (MODE) Switches functions between Clock – Alarm – End.
- (SET) Sets time – switches functions between Minute – Hour – AM/PM – Alarm On/Off
- (+) Used after the (SET) function is activated to adjust the number from 0-9, 0-5, 1-12, AM/PM and Clock On/Off.
- (-) Used after the (SET) function is activated to adjust the numbers from 9-0, 5-0, 12-1.

Setting Clock and Modifying

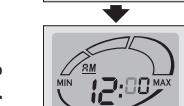
Press (MODE) and hold for 3 seconds.

--BLINKING



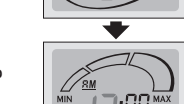
Clock Setting: Min. in single figure

Press (+) or (-) to set minute. Press (SET) once to confirm and go on to the next step.



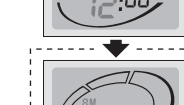
Min. in two figures

Press (+) or (-) to set minute. Press (SET) once to confirm and go on to the Hour Setting.



Hour

Press (+) or (-) to set Hours. Press (SET) once to confirm and go on to the AM/PM Setting.



AM/PM

Press (+) or (-) to set AM or PM. Press (MODE) twice to finish setting and return to the regular Time Display.

Attention:

- Under the AM/PM setting you could Press (SET) once to return to the beginning of Minute Setting if it's necessary.
- Press (MODE) once to go on to the Alarm Setting.

Setting Alarm and Modifying

Press (MODE) and hold for 3 seconds.

--BLINKING



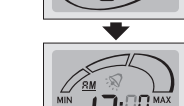
Clock Setting: (Skip)

Press (MODE) once to skip Clock Setting and enter to the Alarm Setting.



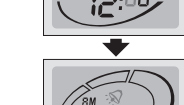
Alarm Setting : Min. in single figure

Press (+) or (-) to set minute. Press (SET) once to confirm setting and move to the next step.



Min. in two figures

Press (+) or (-) to set minute. Press (SET) again to confirm the time and go on to the Hour Setting.



Hour

Press (+) or (-) to set Hours. Press (SET) again to confirm the hour and go to the AM/PM Setting.



AM/PM

Press (+) or (-) to set AM/PM. Press (SET) to the next ON/OFF Setting.



Alarm ON/OFF (Blinking)

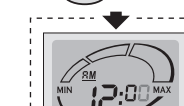
Press (+) or (-) to set Alarm ON/OFF. Press (MODE) again to confirm setting and return to the regular Time Display.

Attention:

Press (SET) once to return to the Time Setting status for re-setting if it's necessary.

Alarm ON/OFF Quick Setting

Press (MODE) and hold for 3 seconds.



Press (MODE) once. Press (SET) four times.

Attention:

- The Clock and Alarm Setting could only be operated when Flashlight is off.
- The already set Alarm function would not be activated while in the operation of Clock and Alarm Setting.
- Press (MODE) twice to return to the regular Time Display if you wish to stop setting while in the operation of Clock and Alarm Setting.

Operation of Clock and Alarm

- Press any button of the (MODE), (SET), (+), (-) for time checking. The Back Light would be on and would last for 10 seconds.
- While the alarm is on and the time's reached to the time set for alarm, a warning sound would be heard and would last for 1 minute until you press any button of the (MODE), (SET), (+), (-) to inactivate it immediately.
- The symbol of would be shown or not shown on regular Time Display Panel while Alarm is being set or cancelled as shown below.



Alarm/ON

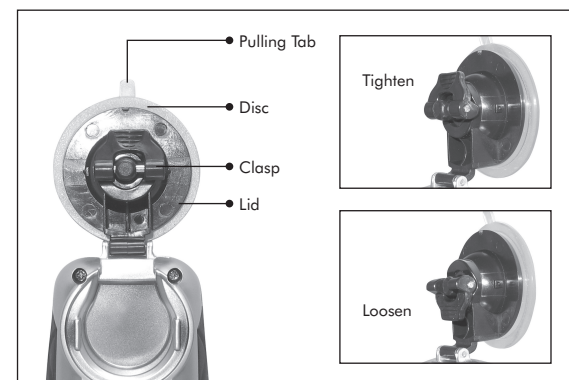


Alarm/OFF

To Operate Suction Cup

Pull the suction cup upward from the flashlight.
Cling to the window so the solar panel is facing outwards towards the light.
Pull the clasp upwards to clink closely to the window.
Pull the clasp down to remove from the window.

Note: The suction cup will not cling to rough or unpolished surfaces.



Attentions

Do not store the product in places without any light source while the battery is in. Auto switch-off device may inactivate the time display automatically when product is not exposed to light to save remaining battery power. Switch flashlight off when not in use. Avoid solar panel contact with rigid or hard objects. The back light is designed to only operate when the functions are being adjusted to save power.

Performance Index

Built-in Lithium battery/LIR2450, 3.6V, 110mAh.

Hanging weight/10KG

Clock Warning Sound/85dB/1 Min.

Run Time (fully charged);

- 3 LEDs in full brightness mode could last for up to 60 Min.
- 3 LEDs in half brightness mode could last for up to 130 Min.
- 3 LEDs in blinking mode could last for up to 130 Min.

Battery Replacement

- Unscrew and take off the Lid.
- Place the battery with the "+" side up into the compartment
- Put the Lid back and screw tightly to complete replacement.

